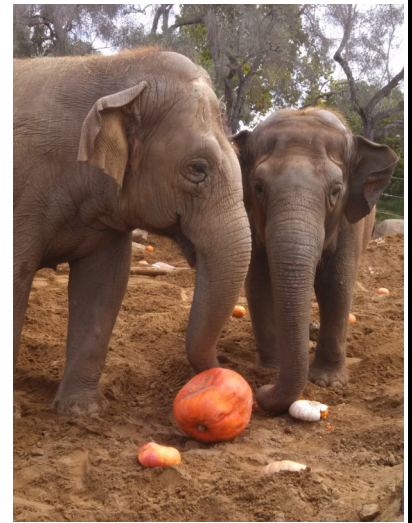


# Help Save Elephants This Halloween

## Elephant-Friendly Sustainable Palm Oil Halloween Candy List

This information is meant to be a helpful guide for consumers that are concerned about elephant conservation and deforestation due to non-sustainable palm oil production in Indonesia, Malaysia, and Sumatra. The companies listed below are members of the RSPO (Roundtable on Sustainable Palm Oil) and are committed to using certified sustainable palm oil. Please support companies that are doing their best to make a difference for elephants, orangutans, tigers, and hornbills.



<u>Company Name</u>	<u>Sample Candy/Snack Name</u>
• <b>Nestle</b>	Baby Ruth, Butterfinger, Crunch
• <b>Wonka (Nestle)</b>	SweeTARTS, Bottlecaps, Laffy Taffy, NERDS
• <b>ConAgra</b>	Fiddle Faddle, Crunch 'n Munch, Poppycock
• <b>Mars</b>	Snickers, Twix, M&M'S, 3 Musketeers, Milky Way, Skittles, Dove
• <b>Haribo</b>	All gummy candies
• <b>Nabisco</b>	Nutter Butter, Chips Ahoy!, Oreo, Teddy Grahams, Ritz
• <b>PepsiCo (Frito-Lay)</b>	Cheetos, Doritos, Grandma's Cookies
• <b>Hershey's</b>	Twizzlers, Jolly Ranchers, Whoppers, Reese's Peanut Butter Cups, Almond Joy, Mr. Goodbar, Heath Bars, Milk Duds
• <b>Walmart</b>	All Great Value and Sam's Choice products
• <b>Kellogg's</b>	Rice Krispie Treats, Fruity Snacks, Pop-Tarts
• <b>Justin's</b>	Peanut Butter Cups, Nut Butter (all flavors)
• <b>Kraft Foods</b>	Planters Nuts, Jell-O snacks

*Note: Any products made by Nestle, Mars, ConAgra, Nabisco, PepsiCo (Frito-Lay), Hershey's, Wal-mart, and Kraft Foods, even if not listed above, are good choices as they are all members of the RSPO.*

Don't see your favorite brand/item on the list? Download the FREE Palm Oil Shopping Guide app and see if they are part of the RSPO.



If your favorite snack/company isn't listed, take action by writing a letter and ask the company to join the RSPO and commit to using certified sustainable palm oil. For a sample letter and more information on how YOU can make a difference for Asian elephants and other animals, visit [www.sbzoo.org/ele](http://www.sbzoo.org/ele) or [www.cmzoo.org/palmoil](http://www.cmzoo.org/palmoil).

